

NO. 78/Z/6



# Recall Campaign Bulletin

SUBJECT:

RECALL CAMPAIGN A443  
Windshield Wiper System

MODELS:

1975 - 1978  
TR7

December, 1978

British Leyland has determined that, on the following ranges of 1975, 1976, 1977 and 1978 Triumph TR7 vehicles, to avoid windshield wiper system failure it will be necessary to install a protective cover on the wiper motor, install a spacer in the wiper wheel box and to check for specific wiper blades and replace as needed. The protective cover is to prevent water ingress into the wiper motor, the spacer is to prevent binding in the wiper wheel box and the replacement of specific wiper blades to reduce drag in the linkage.

- 1975: ACL 1 to ACL 7248
- 1976: ACL 10001 to ACL 33924  
ACW 1 to ACW 6173
- 1977: ACW 7001 to ACW 34000
- 1978: ACW 40000 to ACW 42840

### DEALER VEHICLE CAMPAIGN LIST

Enclosed is a "Dealer Campaign List" listing all affected vehicles which, according to our records, were invoiced to you. Use this list as a worksheet and check off each vehicle as it is campaigned.

Also enclosed is one computer prepared "Campaign Claim" form for any vehicle which may still be listed as in dealer stock. All stock vehicles must be campaigned prior to retail sale.

If a list is not enclosed, then according to our records, you did not receive any of the affected vehicles and this bulletin is for your information.

continued.....

If any vehicle listed as in dealer stock has, in fact, been retailed the dealer must contact the owner and advise him to return the vehicle for campaign work.

The occasion may arise where you are asked to perform Recall Campaign work on a vehicle that was not invoiced to you (i.e., transient owner, etc.). In such a case, normal Recall procedure should be followed.

#### OWNER NOTIFICATION

Commencing December 29, 1978 (Campaign launch date), all owners of record will be sent Recall notifications by first class mail, together with a letter advising them of this condition. (A copy of the owner's letter is attached.) They will be asked to contact their selling dealer or nearest authorized Triumph dealer if more convenient and make an appointment to have their vehicle attended to. They will also be asked to sign and turn over the "Campaign Claim" form to you after the work has been performed.

#### PARTS INFORMATION

Quantities of replacement parts (see list below) to cover initial demand will be shipped to you, chargeable, by your Zone/Distributor. These parts will arrive at your dealership by December 29, 1978 (Campaign launch date). Reimbursement for labor and materials will be through the normal Campaign system. Enclosed in bulletin package are 50 "A443" completion labels. Additional quantities of parts and labels may be ordered through your Zone/Distributor.

#### Parts List

##### REQUIRED PARTS

ULC1825/K Distance Piece (2)  
RKC3979/K Protective Cover (1)  
AAU4952/K Plastic Retaining Strap (1)  
GWE200/K R Wiper Blade (1) if required  
GWB173/K L Wiper Blade (1) if required

##### RELATED PARTS

AAU4072/K Wiper Motor  
AAU6865/K Wheel Box  
54-114161/K Wheel Box Nut  
UKC5914/K Wiper Arm (R)  
UKC5912/K Wiper Arm (L)

**NOTE: THE "RELATED PARTS" LISTED IN THIS BULLETIN ARE FOR YOUR INFORMATION ONLY AND ARE NOT TO BE REPLACED ON EVERY VEHICLE. IN THE EVENT OF ACTUAL FAILURE OF ONE OF THE "RELATED PARTS" WHILE THE VEHICLE IS IN YOUR SHOP, OR IF IN FACT THE VEHICLE IS BROUGHT IN WITH ONE OF THE "RELATED PARTS" INOPERATIVE, IT SHOULD BE REPLACED BUT WITH PRIOR AUTHORIZATION ONLY.**

CAMPAIGN CLAIMS/REPAIR CODES

Complete the applicable "Campaign Claim" form (see Section 22, Warranty Policy and Procedure Manual 1978 - 1979). Insert in the "Repair Code" box on the "Campaign Claim" form the following repair code/s.

NOTE: LABOR ALLOWANCES ARE INCLUSIVE OF ALL RELATED CLERICAL OPERATIONS.

ALL PARTS LISTED WILL BE REIMBURSED AT DEALER COST PLUS 25% HANDLING ALLOWANCE.

GJ: Labor allowance of 1.25 hours.

<u>Labor Operation/s</u>	<u>P/N</u>	<u>Description</u>	<u>Qty/Veh</u>
1. Fit spacers (i.e., distance piece)	ULC 1825/K	Distance piece	2
2. Fit protective cover over motor	RKC 3979/K AAU 4952/K	Protective cover Retaining strap	1 1

GK: Labor allowance of 1.25 hours.

<u>Labor Operation/s</u>	<u>P/N</u>	<u>Description</u>	<u>Qty/Veh</u>
1. Fit spacers (i.e., distance piece)	ULC 1825/K	Distance piece	2
2. Fit protective cover over wiper motor	RKC 3979/K AAU 4952/K	Protective cover Retaining strap	1 1
3. Replace wiper blades	GWB 200/K GWB 173/K	R/H blade L/H blade	1 1

GL: Labor allowance of 0.50 hours.

<u>Labor Operation/s</u>	<u>P/N</u>	<u>Description</u>	<u>Qty/Veh</u>
1. Fit protective cover over wiper motor	RKC 3979/K AAU 4952/K	Protective cover Retaining strap	1 1

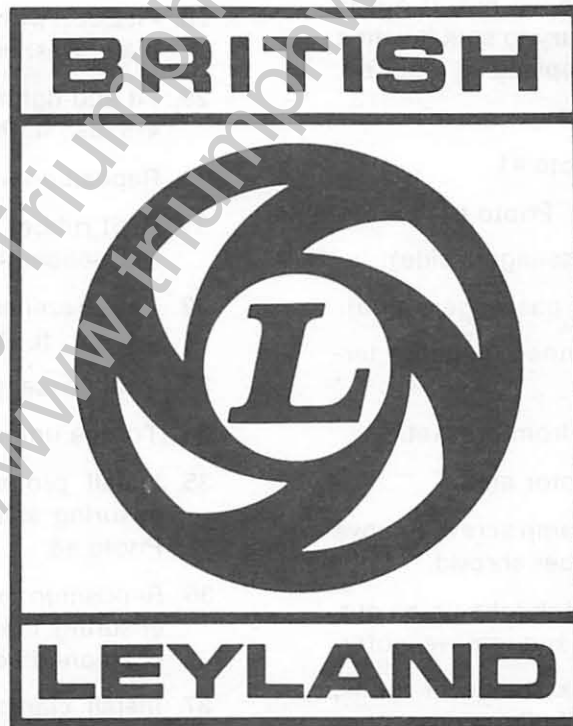
Provided Courtesy Triumph Wedge Owners Association  
<http://www.triumphwedgeowners.org>

# WORKSHOP PROCEDURES

## RECALL CAMPAIGN

A443 TR7

### WINDSHIELD WIPER SYSTEM



# RECALL A443

All vehicles from **ACL1 onwards and ACW1 to 42840** will require one or more of the following operations to be carried out.

Wiper motor shield to be fitted.

Wiper wheelboxes spacers to be fitted.

Wiper and blades checked and replaced as necessary.

All vehicles from **ACL1 onwards and ACW1 to ACW 40897** require Operation #1.

All vehicles from **ACW 40898 to ACW 42840** require Operation #2.

## **OPERATION #1. FITMENT OF WHEEL BOX SPACERS, WIPER MOTOR COVER AND REPLACEMENT OF WIPER BLADES AS NECESSARY.**

1. Remove fresh air duct for access.
2. Remove cover plate. L/S wiper wheel box. Photo #1.
3. Release wiper arm from spindle (driver's side). Photo #1.
4. Lubricate wheel box securing nut with penetrating oil and remove nut. If nut is seized it will be necessary to split it with a very sharp chisel and replace as required.
5. Remove bezel. Photo #1.
6. Remove wiper arm. Photo #1.
7. Remove rubber washer. Photo #1.
8. Remove wiper arm (passengers side).
9. Repeat Item 4, 5, 7 (on passengers side).
10. Remove battery, disconnect negative terminal first.
11. Remove washer bottle from bracket.
12. Displace wires from motor area.
13. Remove wiper motor clamp screw, remove clamp and discard rubber shroud.
14. Undo wiper motor to rack tube union nut. Disconnect wiper plug and remove motor.
15. Remove 3 hood lock platform bolts, (2 bolts drivers side), 1 bolt top passenger side, loosen remaining bolt, pivot platform down. Photo #2.
16. Scribe a line to note the radial position of the tubes to the wheel boxes.

17. Displace wheel boxes from mounting position and maneuver tubes and wheel boxes from bulkhead.
18. Fit spacers to bulkhead and maneuver to position (large end first). Photo #3 & 4.
19. Remove wheelbox backplate securing nuts and backplates.
20. Grease rack and wheel boxes with multi purpose grease, such as Quaker State NLG1 #2 or Castrol M/P.
21. Refit wheel box backplates and align tubes as per scribe lines. Approximate alignment photo #5.
22. Fit and tighten wheel box backplate nuts to 15 lb. in.
23. Refit assembly to bulkhead.
24. Fit motor and rack assembly to tubes and maneuver motor to its position on mounting plinth, refitting wiper motor plug connector. Photo #6.
25. Refit rack tube union nut to motor finger tight.
26. Refit rubber washer to wheel box spindle (driver's side).
27. Fit wiper arm pivot plate over spindle.
28. Fit Bezel with tongue located through pivot plate, washer and body slot.
29. Fit and tighten wheel box securing nut to 4-5 lbs., ft. Photo #7.
30. Reposition wiper arm to wheel box spindle.
31. Refit rubber washer to wheel box spindle (passenger side).
32. Refit Bezel and fit securing nut torqued to 4-5 lbs., ft. Photo #7.
33. Refit passenger's wiper arm.
34. Torque union nut to motor to 5-6 lbs. ft.
35. Install protective cover to wiper motor ensuring shield is fully seated on motor. Photo #8.
36. Reposition motor onto mounting position ensuring that insulation pad is correctly positioned beneath motor. Photo #8.
37. Install clamp and tighten clamp attachment screw. Photo #8.
38. Install plastic retaining strap to shield of body pipe. Photo #8.
39. Reposition wires in motor area.

40. Reposition washer bottle into bracket.
41. Refit battery.
42. Refit hood platform.
43. Refit blanking plate and securing screws.
44. Refit Fresh Air Duct.
45. On 1976 Model year cars only proceed as follows:—
46. Examine wiper blades to determine identifications as shown in Photo #9.
47. If blades fitted are type 'A' change blades to 'B'.
48. Affix A443 campaign label to TOP OF LEFT HAND spring tower. Ensure your dealer number is inserted on the label.

#### **OPERATION #2. FITMENT OF PROTECTIVE COVER TO WIPER MOTOR ONLY.**

2. Remove wires from wiper motor area.
3. Remove wiper motor clamp screw.
4. Remove clamp and discard clamp shroud.
5. Move wiper motor towards front of vehicle and fit shield ensuring that shield is fully seated on motor.
6. Reposition motor into mounting position ensuring that insulation pad is correctly positioned beneath motor.
7. Fit motor clamp and retighten clamp fixing screw. Photo #7.
8. Fit plastic retaining strap to shield and Bundy tube. Photo #7.
9. Reposition wires and install washer bottle into bracket.
10. Affix A443 campaign label to TOP OF LEFT HAND spring tower. Ensure your dealer number is inserted on the label.

Repair times for the operations are as follows:—

Operation 1 = 1.25 hrs.  
 Operation 2 = 0.50 hrs. Includes Set-Up Time

#### **TOOL REQUIREMENT GUIDE**

- 1 - 3/8" Socket 1/4" drive
- 1 - 1/2" Flex Socket 3/8" drive
- 1 - 3/8" drive 12" extension
- 1 - 3/8" drive ratchet
- 1 - 13/16" 12 pt. socket deep 3/8" drive
- 1 - Inch Lb. Torque Wrench
- 1 - Adaptor 1/4" drive to 3/8"
- 1 - 7/16" deep socket 3/8" drive
- 1 - Pliers
- 1 - Screwdriver Posidrive #2
- 1 - Screwdriver straight blade
- 1 - Scriber

#### **REQUIRED PARTS**

- |           |                               |
|-----------|-------------------------------|
| ULC1825/K | Distance Piece (2)            |
| RKC3979/K | Protective Cover (1)          |
| AAU4952/K | Plastic Retaining Strap (1)   |
| GWB200/K  | R Wiper Blade (1) if required |
| GWB173/K  | L Wiper Blade (1) if required |

#### **RELATED PARTS**

- |             |               |
|-------------|---------------|
| AAU4072/K   | Wiper Motor   |
| AAU6865/K   | Wheel Box     |
| 54 114161/K | Wheel Box Nut |
| UKC5914/K   | Wiper Arm (R) |
| UKC5912/K   | Wiper Arm (L) |

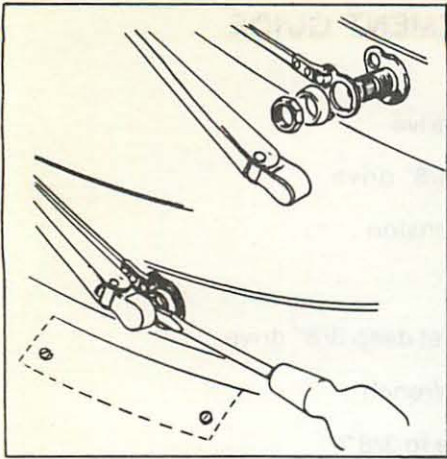


PHOTO #1

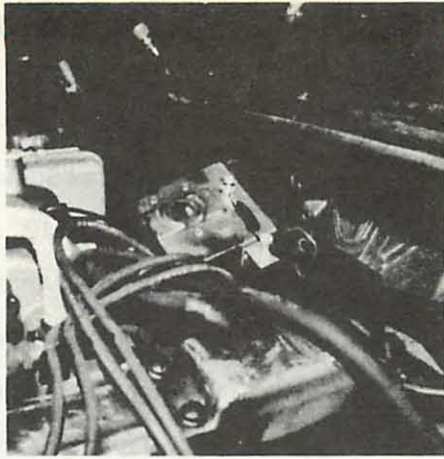


PHOTO #2



PHOTO #3

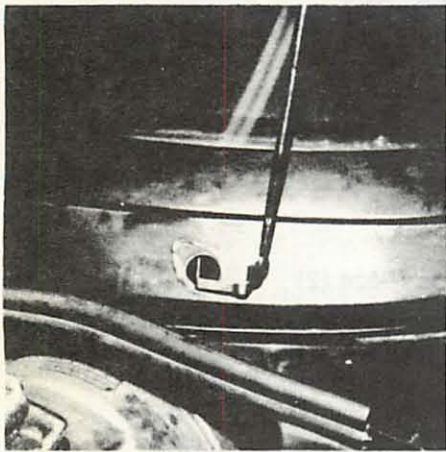


PHOTO #4



PHOTO #5

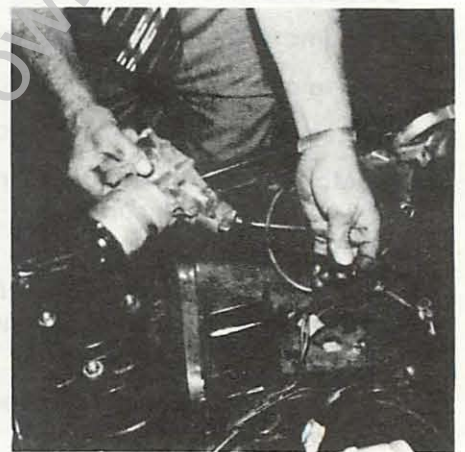


PHOTO #6



PHOTO #7

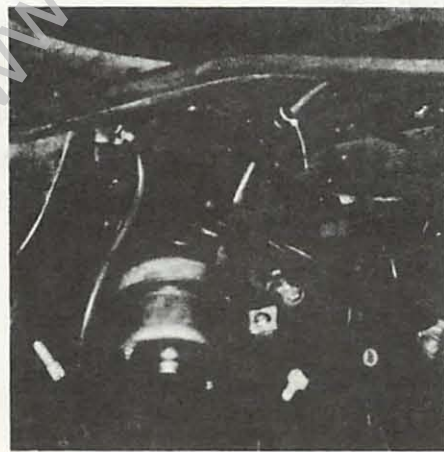


PHOTO #8

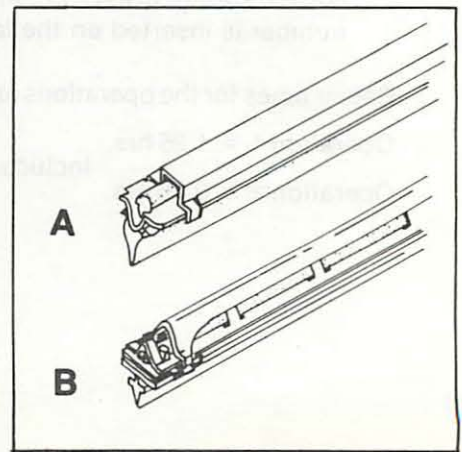


PHOTO #9